

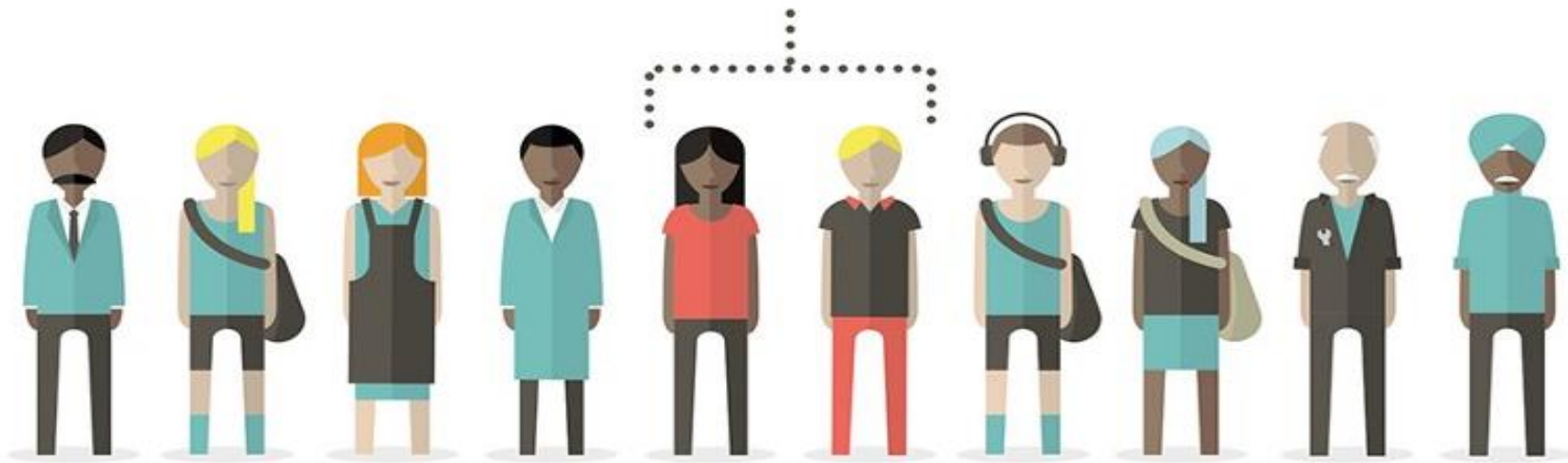


Bernd MERZ, 11<sup>th</sup> Transatlantic Conference

June 21, 2019

## HOW MANY PEOPLE ARE CONSIDERING GIG WORK?

**18%** OF THE WORKING AGE POPULATION  
WOULD CONSIDER SOME FORM OF GIG WORK



SOURCE: RSA/IPSOS MORI SURVEY

## WHAT SERVICES ARE GIG WORKERS PROVIDING?



**59%**

PROVIDE  
PROFESSIONAL, CREATIVE OR  
ADMINISTRATIVE SERVICES



**33%**

PROVIDE  
SKILLED MANUAL OR  
PERSONAL SERVICES



**16%**

PROVIDE  
DRIVING AND  
DELIVERY SERVICES

(SOME GIG WORKERS ARE PROVIDING MORE THAN ONE TYPE OF SERVICE)

SOURCE: RSA/IPSS MORI SURVEY

# BREAKDOWN OF SERVICES PROVIDED BY GIG WORKERS



(SOME GIG WORKERS ARE PROVIDING MORE THAN ONE TYPE OF SERVICE)

SOURCE: RSA/IPSOS MORI SURVEY

## HOW DEPENDENT ARE GIG WORKERS ON PLATFORMS?

62% OF GIG WORKERS ARE  
**SUPPLEMENTING**  
SOME OTHER FORM OF INCOME



ARE ALSO  
FULL-TIME EMPLOYEES



ARE ALSO  
PART-TIME EMPLOYEES



ARE ALSO  
SELF-EMPLOYED



ARE IN  
TEMPORARY / OTHER WORK

(SOME GIG WORKERS ARE ALSO SELF-EMPLOYED AND IN TEMPORARY WORK)

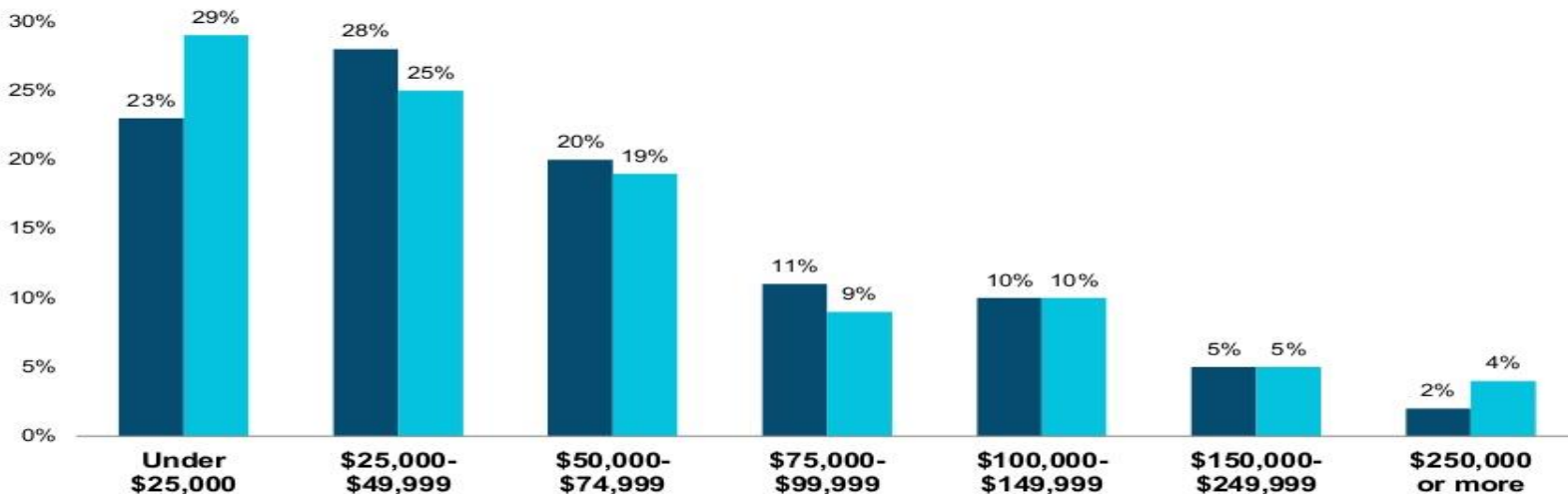
SOURCE: RSA/IPSOS MORI SURVEY

# The Income Gap Between Traditional and Gig Workers Is Narrow



Individual income.

35% **Traditional Workers** **Gig Workers**



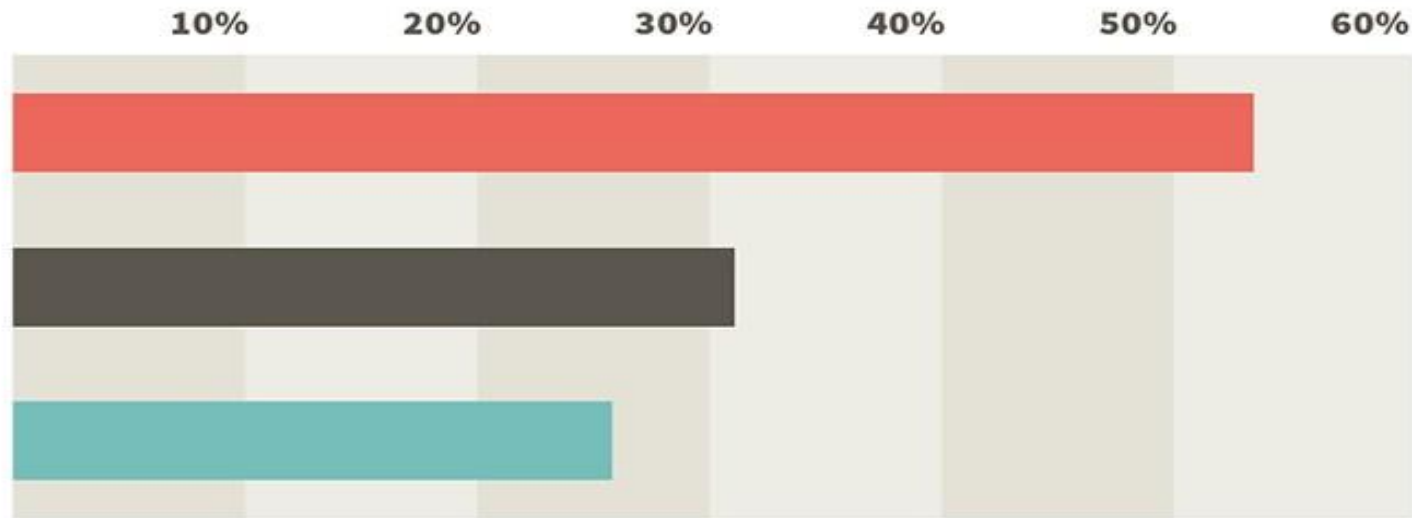
Base: Gig Workers (N=166), Traditional Workers (N=373)

INVEST WITH CONFIDENCE\*

T. ROWE PRICE

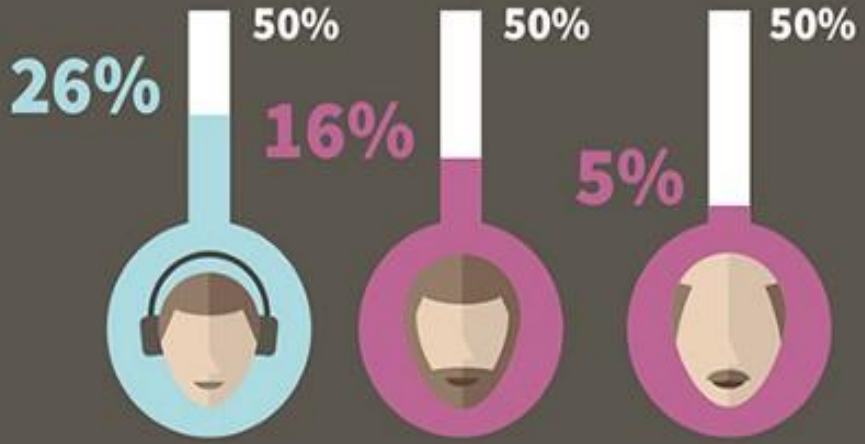
32

## WHAT MOTIVATES GIG WORKERS?



- Better opportunities, flexibility or pay
- Wanted to make extra money
- Couldn't find sufficient work through other means

SOURCE: RSA/IPSOS MORI SURVEY



YOUNG PEOPLE ARE  
**MORE LIKELY**  
 TO CONSIDER GIG WORK  
 THAN OLDER PEOPLE.



YOUNG PEOPLE ARE  
 INTERESTED IN  
**ALL FORMS**  
 OF GIG WORK.

SOURCE: RSA/IPSON MORI SURVEY

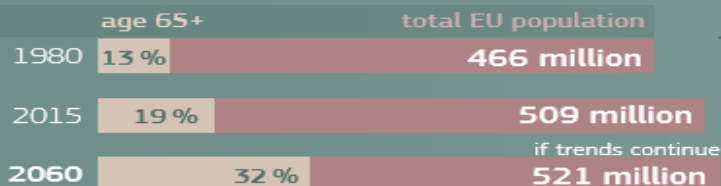


# DEMOGRAPHIC SCENARIOS FOR THE EU

## MIGRATION, POPULATION AND EDUCATION

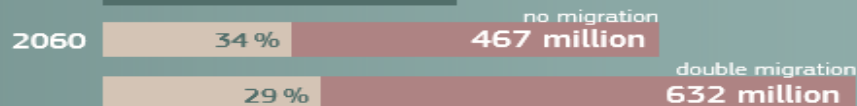
### KEY MESSAGES

The share of the *population over age 65* is bound to *increase*



How can we *avoid overburdening our social system with population ageing?*

*increase migration?*



or *increase fertility?*



Even much higher immigration or fertility will *not change* the pace of *population ageing significantly* by 2060



life expectancy in the EU today

A *longer active life* can help address the challenges related to *population ageing*



*Population ageing and a smaller labour force* means that *European workers* will need to *support more dependents* in the future



# The movement of workers towards wealthier EU states speeds up ageing and population decline in eastern Member States



In 2015, **54 %** of EU-28 population lived in western Member States. If trends continue, by 2060 that share will be **59 %**

## 2060 if intra-EU mobility



In 2015, the share of *people aged 65+* was the same in both country groups, but it will grow faster in the *eastern Member States* by 2060

